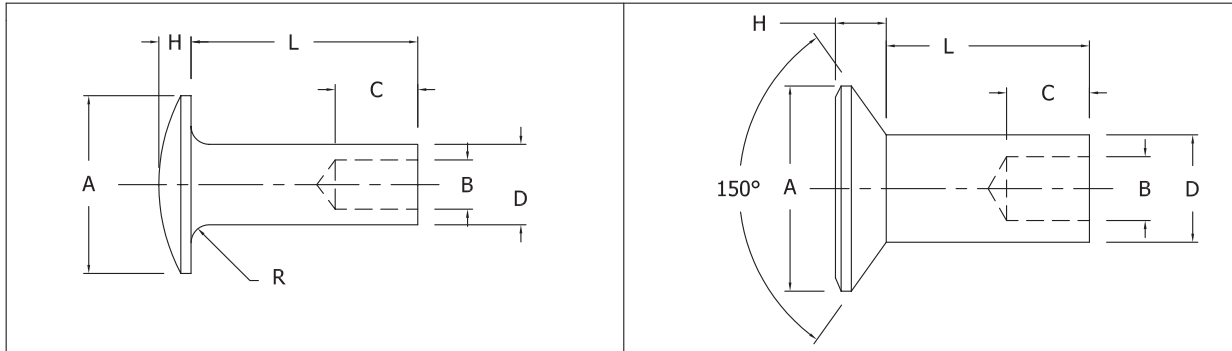




# Large Diameter Semi-Tubular Rivets (OVER 5/16")

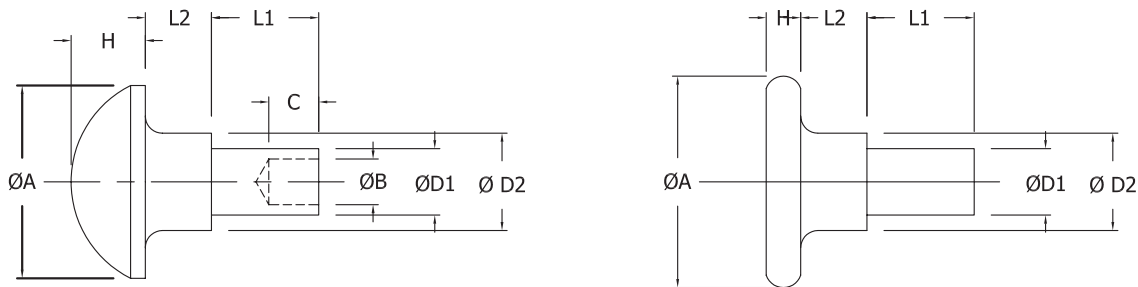


DWG.6		OVAL HEAD			DWG.7		COUNTERSUNK HEAD	
TYPE	HEAD	BODY Ø "D"	HEAD Ø "A"	HEAD THICKNESS "H"	STRAIGHT HOLE Ø "B"	STRAIGHT HOLE DEPTH "C"	SUGGESTED CLINCH ALLOWANCE	HOLE Ø IN ASSEMBLY
U-0	CSK OR OVAL	0.370 0.380	0.493 0.507	0.120 0.130	0.281	9/32"	0.219	0.390
U-1	CSK OR OVAL	0.370 0.380	0.740 0.760	0.120 0.130	0.281	9/32"	0.219	0.390
U-2	CSK OR OVAL	0.370 0.380	0.990 1.010	0.151 0.161	0.281	9/32"	0.219	0.390
V-1	CSK OR OVAL	0.432 0.435	0.740 0.760	0.120 0.130	AS REQUIRED		0.250	0.453
V-2	CSK OR OVAL	0.432 0.435	1.240 1.260	0.135 0.145	AS REQUIRED		0.250	0.453
W-1	CSK OR OVAL	0.495 0.500	0.740 0.760	0.135 0.145	AS REQUIRED		0.281	0.516
W-2	CSK OR OVAL	0.495 0.500	1.240 1.260	0.135 0.145	AS REQUIRED		0.281	0.516

NOTE:- Tapered hole rivets in the above sizes will be quoted on request. Flat head rivet supplied to the same basic dimensions.

## Shoulder Rivets

There are no "standard" dimensions given for the shoulder rivets as these parts are normally made to order. Shown are two types most commonly used.



**Quoted on request**

PRODUCT SPECIFICATIONS IN THIS CATALOGUE ARE THOSE IN EFFECT AT THE TIME OF PUBLISHING