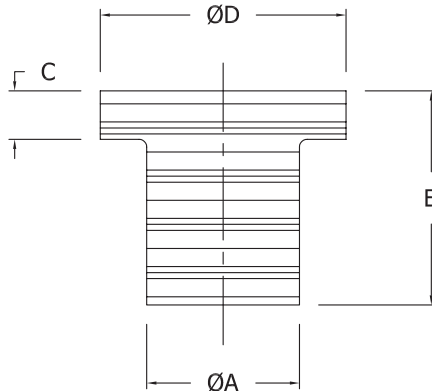


MATERIAL :Neoprene, E.P.D.M



Item #	Thread Size		A	Hole Size	Grip Range	B	C	D	Tightennng Torque (KGf/CM)	Hardness (+/-5)
	Standard	Metric								
RRUB-632	6-32	M3x0.5	7.9	7.9-8.2	0.4-4.0	12.60	1.40	11.0	2.5-5.0	60
RRUB-832	8-32	M4x0.7	7.9	7.9-8.2	0.4-4.0	12.60	1.40	11.0	2.5-4.0	70
RRUB-1032-1	10-32	M5x0.8	9.6	9.6-9.8	0.5-1.5	11.00	1.50	12.7	3.5-5.0	65
RRUB-1032-2	10-32	M5x0.8	9.6	9.6-9.8	0.4-4.9	14.10	0.90	12.7	3.5-5.0	60
RRUB-1032-3	10-32	M5x0.8	9.6	9.6-9.8	0.85-5.9	17.00	1.00	14.0	3.0-7.0	60
RRUB-1032-4	10-32	M5x0.8	9.6	9.6-9.8	0.8-5.8	20.95	4.70	18.95	4.0-7.0	60
RRUB-1032-5	10-32	M5x0.8	9.6	9.6-9.8	0.8-5.8	18.00	2.00	19.0	3.0-7.0	60
RRUB-1032-6	10-32	M5x0.8	9.6	9.6-9.8	7.9-11.4	21.50	0.90	14.0	3.0-9.0	60
RRUB-1032-7	10-32	M5x0.8	9.6	9.6-9.8	7.9-16.0	26.10	1.30	14.0	3.0-7.0	60
RRUB-1032-8	10-32	M5x0.8	9.6	9.6-9.8	20.5-30.0	39.80	1.30	14.0	3.5-5.0	60
RRUB-420-1	1/4"-20	M6x1.0	12.7	12.7-12.9	0.4-2.8	16.00	1.30	16.0	6.0-10.0	60
RRUB-420-2	1/4"-20	M6x1.0	12.7	12.7-12.9	0.8-4.7	21.10	4.75	19.05	8.0-10.0	70
RRUB-420-3	1/4"-20	M6x1.0	12.7	12.7-12.9	6.4-11.5	26.70	2.00	16.3	8.0-10.0	70
RRUB-518-1	5/16"-18	M8x1.25	15.9	15.9-16.1	0.4-4.0	18.30	3.20	21.5	10.0-15.0	60
RRUB-518-2	5/16"-18	M8x1.25	15.9	15.9-16.1	3.95-16.1	27.93	5.72	21.5	10.0-16.0	60

**NOTICE:**

1. The "Rubber Nut" must be kept away from oil and solvent.
2. The adjustable screw drive with specified setting torque should be used in operation.
3. Range of temperature applied -30°C to 80°C.

Product specification are in effect at the time of publishing