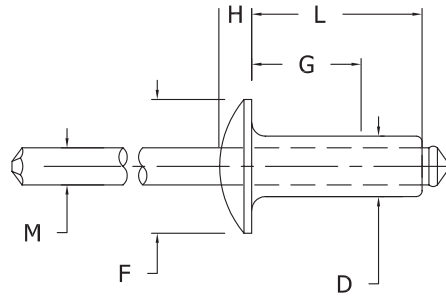


DOME FLANGE

BLIND RIVETS



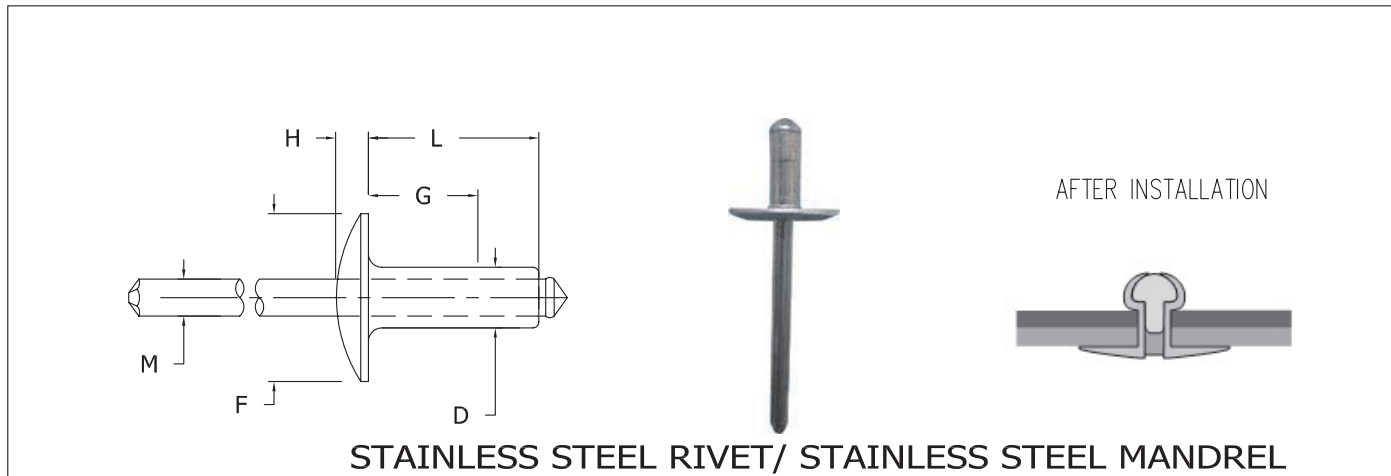
AFTER INSTALLATION



STAINLESS STEEL RIVET/ STAINLESS STEEL MANDREL

Part Number	Hole Size And Drill Number	Mandrel Ø (M)	Flange Ø (F)	Max. Head Height (H)	Max. Barrel Length (L)	Rivet Size (D)	Grip Range (G)	Typical Strength	
								Shear	Tensile
SCCA 41	.129-.133 #30	.076	.250	.045		1/8		550 lbs	700 lbs
42									
43									
44									
45									
46									
48									
410									
SCCA 52	.160-.164 #20	.095	.312	.055		5/32		900 lbs	1100 lbs
53									
54									
56									
58									
510									
SCCA 62	.192-.196 #11	.114	.375	.060		3/16		1000 lbs	1375 lbs
63									
64									
66									
68									
610									

Product specification are in effect at the time of publishing



STAINLESS STEEL RIVET/ STAINLESS STEEL MANDREL

Part Number	Hole Size And Drill Number	Mandrel \varnothing (M)	Flange \varnothing (F)	Max. Head Height (H)	Max. Barrel Length (L)	Rivet Size (D)	Grip Range (G)	Typical Strength	
								Shear	Tensile
SCCB 42	.129-.133 #30	.076	.375	.065	.275	1/8	.020 - .125	550 lbs	700 lbs
44					.400		.126 - .250		
SCCB 64	.192-.196 #11	.114	.625	.092	.450	3/16	.126 - .250	1000 lbs	1375 lbs
66					.575		.251 - .375		
68					.700		.376 - .500		
610					.825		.500 - .625		
612					.950		.626 - .750		